

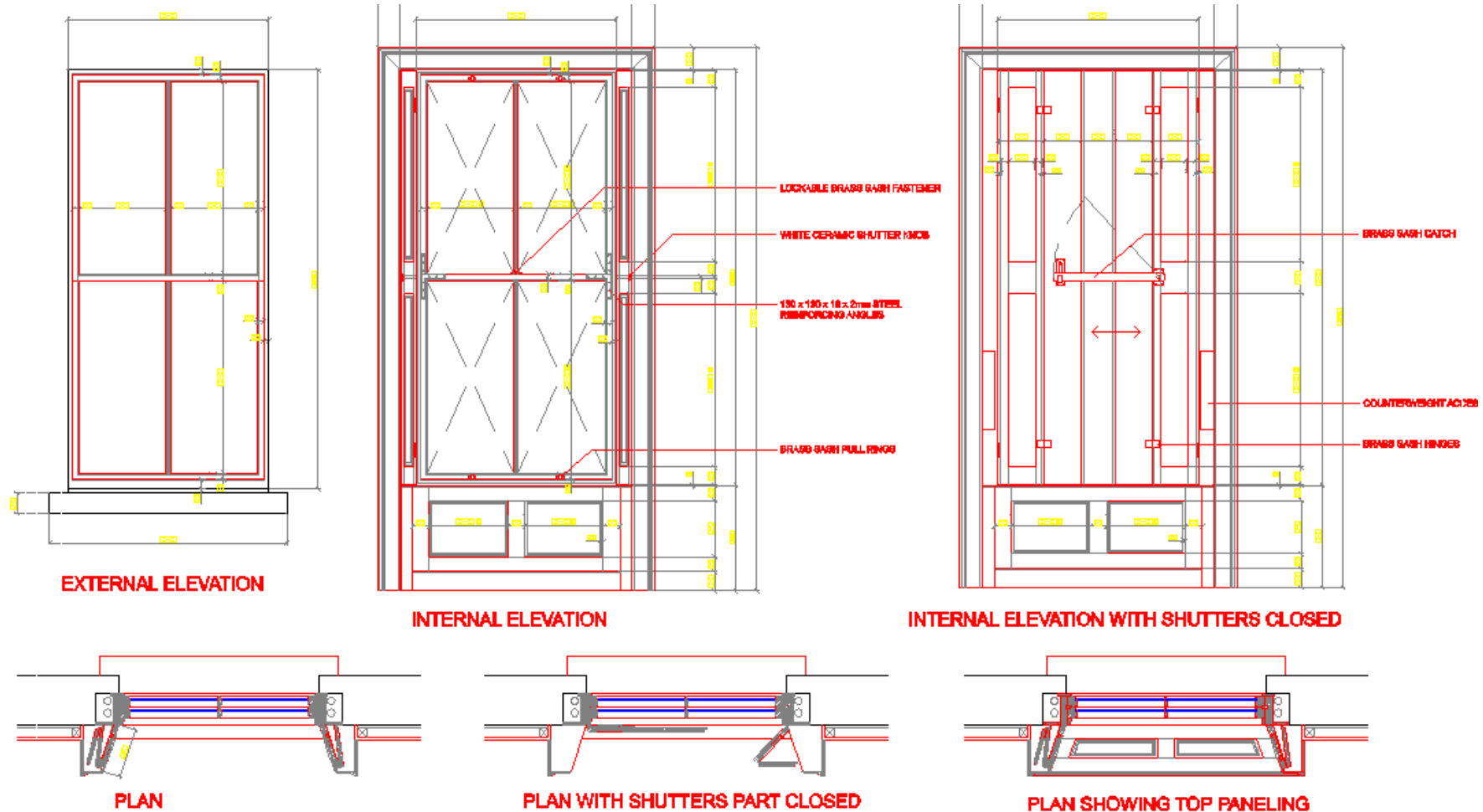
Architectural Drawing of a Victorian Sash Window with Shutters and Panelling

sashwindows.ie

87 Bracken Hill, (01) 2130213

Sandyford, (086)2554945

Dublin 18. www.sashwindows.ie



EXACT WINDOW OPENINGS TO BE CHECKED ON SITE BEFORE JOINERY MANUFACTURE. ALL JOINERY TO BE MANUFACTURED USING TRADITIONAL MID-VICTORIAN DETAILING, SECTION SIZES AND PROFILES. INCLUDING 25mm BRIGHTLINE GLAZING BARS, 35mm BRIGHTLINE MEETING RULES, STAFF BEADS, WRENTHS, PULLYS AND

DO NOT USE SPIGGOTS WHEN GLAZING. DO NOT USE DRAFT COLLEDS, STRIPS OR PERIMETER VENTILATORS (WINDOWS ARE TO BE CONSTRUCTED TO DRAUGHT IN THE TRADITIONAL MANNER).

PROPRIETARY PANEL MOULDINGS MAY BE USED WHERE APPROPRIATE. SHOP DRAWINGS AND ALL TURNING SECTIONS TO BE APPROVED BY THE ARCHITECT PRIOR TO MANUFACTURE.